

RANGER ARCHITECTURAL PRODUCTS

Manufacturing The Future Of Architectural Products



RRL-500H

HIGH PERFORMANCE RAIN-RESISTANT (WIND DRIVEN) EXTRUDED ALUMINUM LOUVER

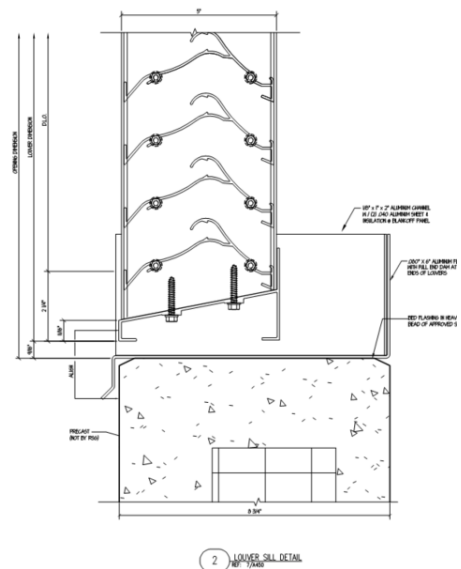
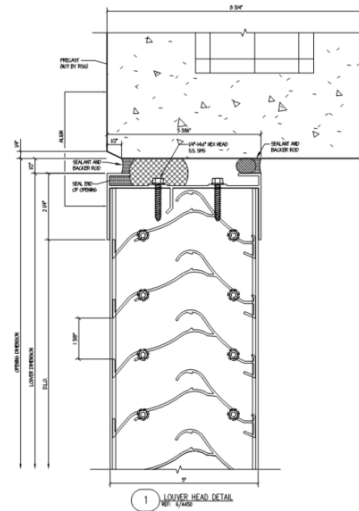
The Ranger Architectural Products RRL-500H series louver is a 5" deep rain-resistant (wind driven) Horizontal blade louver for use in applications where resistance to wind driven rain is a priority, while still achieving a maximum volume of intake and exhaust ventilation.

STANDARD CONSTRUCTION:

- Frame and perimeter extrusions: .081", 6063-T5 Aluminum
- Frame width: 5-1/4"
- Blade extrusions: .063", 6063-T5 Aluminum
- Assembly connection: Mechanically fastened (stainless steel fasteners)
- Finish: Mill finish (Standard)
- Sill Pan: .080" Formed Aluminum (Welded End Dams optional)
- Sizing limitations for factory assembled louvers: 12" x 12" minimum size, 120" x 84"/84" x 120" maximum size

CONSTRUCTION OPTIONS:

- Hidden mullions available for splice joints
- Various birdscreen options
- Flanged frame options
- Custom sill pan options
- Glazing adaptors for glazed-in applications
- Clip angles and other mounting hardware options
- Security bars
- Welded construction
- Finish Options: AAMA 2605, AAMA 2604, and Anodized



RANGER ARCHITECTURAL PRODUCTS, INC.
19031 ALDINE WESTFIELD ROAD
HOUSTON, TX 77073

LET RANGER ARCHITECTURAL PRODUCTS, INC. BRING YOUR ARCHITECTURAL VISIONS TO LIFE