

# RANGER ARCHITECTURAL PRODUCTS

*Manufacturing The Future Of Architectural Products*



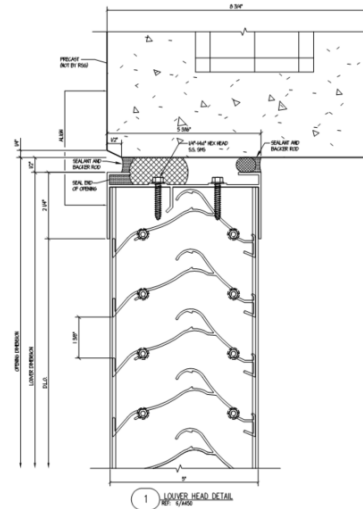
## **RRL-400H**

### **HIGH PERFORMANCE RAIN-RESISTANT (WIND DRIVEN) EXTRUDED ALUMINUM LOUVER**

The Ranger Architectural Products RRL-400H series louver is a 4" deep rain-resistant (wind driven) louver for use in applications where resistance to wind driven rain is a priority, while still achieving a maximum volume of intake and exhaust ventilation.

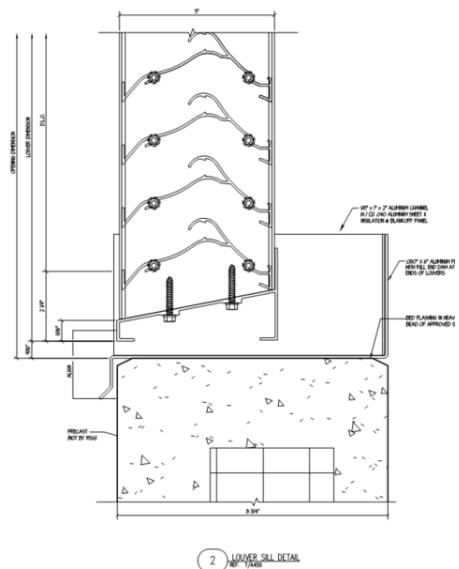
#### **STANDARD CONSTRUCTION:**

- Frame and perimeter extrusions: .081", 6063-T5 Aluminum
- Frame width: 4-1/4"
- Blade extrusions: .063", 6063-T5 Aluminum
- Assembly connection: Mechanically fastened (stainless steel fasteners)
- Finish: Mill finish (Standard)
- Sill Pan: .080" Formed Aluminum (Welded End Dams optional)
- Sizing limitations for factory assembled louvers: 12" x 12" minimum size, 120" x 84"/84" x 120" maximum size



#### **CONSTRUCTION OPTIONS:**

- Hidden mullions available for splice joints
- Various birdscreen options
- Flanged frame options
- Custom sill pan options
- Glazing adaptors for glazed-in applications
- Clip angles and other mounting hardware options
- Security bars
- Welded construction
- Finish Options: AAMA 2605, AAMA 2604, and Anodized



RANGER ARCHITECTURAL PRODUCTS, INC.  
19031 ALDINE WESTFIELD ROAD  
HOUSTON, TX 77073

**LET RANGER ARCHITECTURAL PRODUCTS, INC. BRING YOUR ARCHITECTURAL VISIONS TO LIFE**

[www.rangerarchitectural.com](http://www.rangerarchitectural.com)

# RANGER ARCHITECTURAL PRODUCTS

*Manufacturing The Future Of Architectural Products*



## **RRL-400H**

**HIGH PERFORMANCE RAIN-RESISTANT (WIND DRIVEN) EXTRUDED ALUMINUM LOUVER**

**RRL-400H (WIND-DRIVEN LOUVER SYSTEM) FREE AREA TABLE**

LOUVER HEIGHT (IN)	LOUVER WIDTH (IN)									
	12	24	36	48	60	72	84	96	108	120
12	0.26	0.68	1.09	1.51	1.93	2.34	2.40	2.76	3.59	3.49
24	0.63	1.63	2.63	3.63	4.47	5.28	6.23	7.18	8.13	9.07
36	0.99	2.57	4.16	5.74	7.22	8.53	10.06	11.59	13.13	14.66
48	1.35	3.52	5.69	7.85	9.97	11.78	13.90	16.01	18.13	20.24
60	1.72	4.47	7.22	9.97	12.72	15.03	17.73	20.43	23.13	25.82
72	2.03	5.28	8.53	11.78	15.03	18.28	21.56	24.84	28.13	31.41
84	2.40	6.23	10.06	13.90	17.73	21.56	25.40	29.26	33.13	36.99
96	2.76	7.18	11.59	16.01	20.43	24.84	29.26	33.68	38.13	42.57
108	3.13	8.13	13.13	18.13	23.13	28.13	33.13	38.13	43.13	48.16
120	3.49	9.07	14.66	20.24	25.82	31.41	36.99	42.57	48.16	53.74

RANGER ARCHITECTURAL PRODUCTS, INC.  
19031 ALDINE WESTFIELD ROAD  
HOUSTON, TX 77073  
(281) 821-3777

**LET RANGER ARCHITECTURAL PRODUCTS, INC. BRING YOUR ARCHITECTURAL VISIONS TO LIFE**

[www.rangerarchitectural.com](http://www.rangerarchitectural.com)